

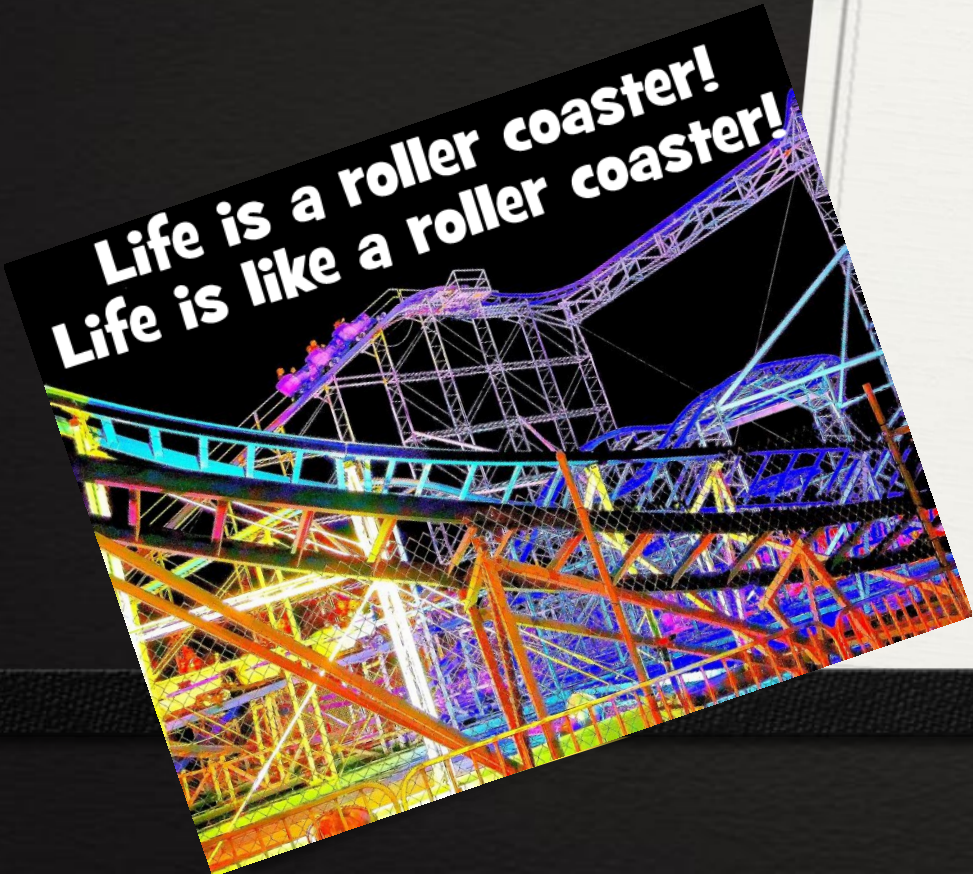
**Life is like a roller coaster!**



# **Similes and Metaphors**

# What are Similes and Metaphors?

Similes and metaphors share some common traits ...



- Both are literacy devices that serve to create vivid imagery in literary texts.
- Both are used to make comparisons.
- Both often connect two items which might not otherwise be connected.



# What are Similes?

**She felt as  
warm as toast.**



What are Similes?

➤ **A simile is a figure of speech that makes a comparison, showing similarities between two different things.**

➤ A simile is a direct comparison and uses the word 'like' or 'as' in the comparison.

**The boy ran like  
the wind.**



# What are Metaphors?

**This metaphor says that the exam **was** a walk in the park. It implies that the exam was as stress free as a walk in the park. It was easy!**

**The exam **was** a walk in the park.**



- **A metaphor also makes comparisons between objects. However, a metaphor does not include the words 'like' or 'as' in the comparison.**
- **Metaphors are more subtle than similes. In a metaphor the words 'is' or 'was' are often used.**



# What are Metaphors?

**Life is a  
rollercoaster!**



This metaphor compares life with a rollercoaster. It says life **is** a roller coaster. It has its ups and downs and can be scary and yet exciting. Much is conveyed in a few words.

**The difference between similes and metaphors can be shown by similar lyrics from two different songs.**

**Life is a Highway.  
This is a  
metaphor. The  
words 'like' or 'as'  
are not used.**

**“Life is a Highway” (Tom Cochrane)**

**My heart is like an  
open highway. This  
is a simile. The  
word 'like' is used in  
direct comparison.**

**“My heart is like an open highway”  
(Bon Jovi)**





# Why Use Similes and Metaphors?

This simile is from “The Highwayman” by Alfred Noyes.

The hours crawled  
by **like** years.



- **Metaphors can be used to describe abstract ideas.**
- **Similes and metaphors make texts more interesting and engaging for the reader or listener. They paint a vivid picture in the mind.**

**“The Highwayman” by Alfred Noyes contains a metaphor and two similes in the same verse. Can you identify them?**



**“His eyes were hollows of madness,  
His hair like mouldy hay.  
But he loved the landlord’s daughter,  
The landlord’s red-lipped daughter.  
Dumb as a dog he listened,  
And he heard the robber say.”**

**“The Highwayman” by Alfred Noyes**



“His eyes were “hollows of madness” is a metaphor. “Hair like mouldy hay” and “dumb as a dog” are similes.



“His eyes were hollows of madness,  
His hair like mouldy hay”  
But he loved the landlord’s daughter,  
The landlord’s red-lipped daughter.  
Dumb as a dog he listened,  
And he heard the robber say.”

“The Highwayman” by Alfred Noyes

**Create a simile and a metaphor for ...**



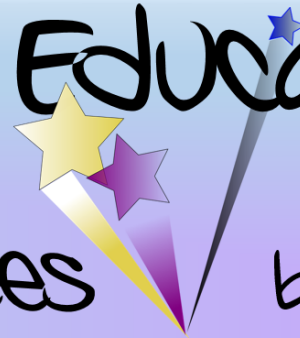
***happiness***



# Inspire and Educate

Educational Resources

by Krazikas



**For more inspiring  
educational resources  
click on the banner  
above.**

