

# Living Things and Their Habitats

## Clue for Digit 1

Living things can be classified into different groups. Sort these animals into the correct groups.

Mammals	Reptiles	Fish	Birds	Amphibians
---------	----------	------	-------	------------

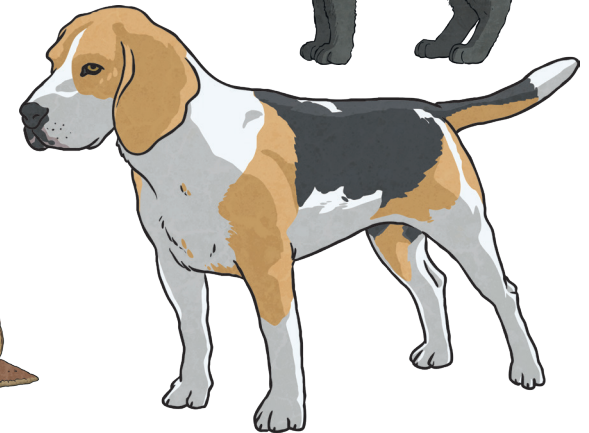
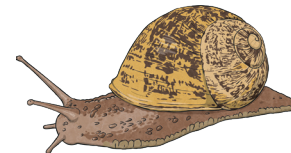
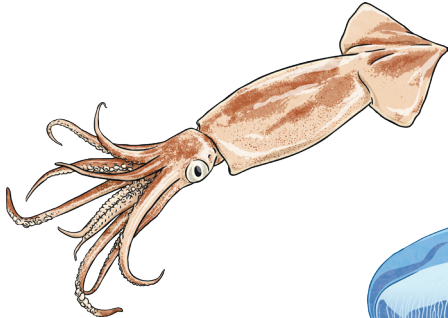
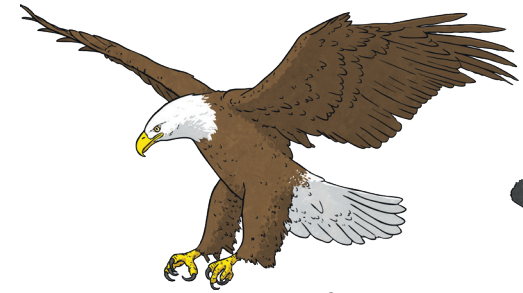
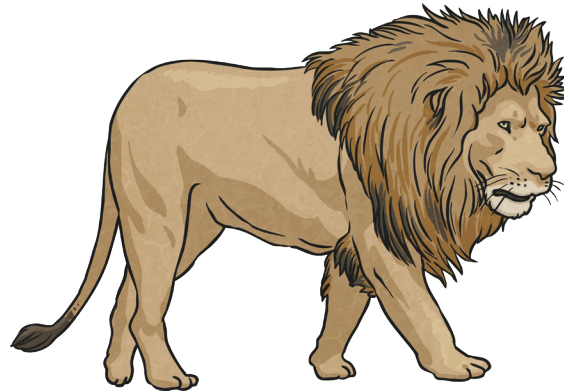


The number of mammals is the first digit on the keypad.

# Living Things and Their Habitats

## Clue for Digit 2

Living things can be grouped as to whether they are vertebrates or invertebrates.  
Sort these animals into the two groups.

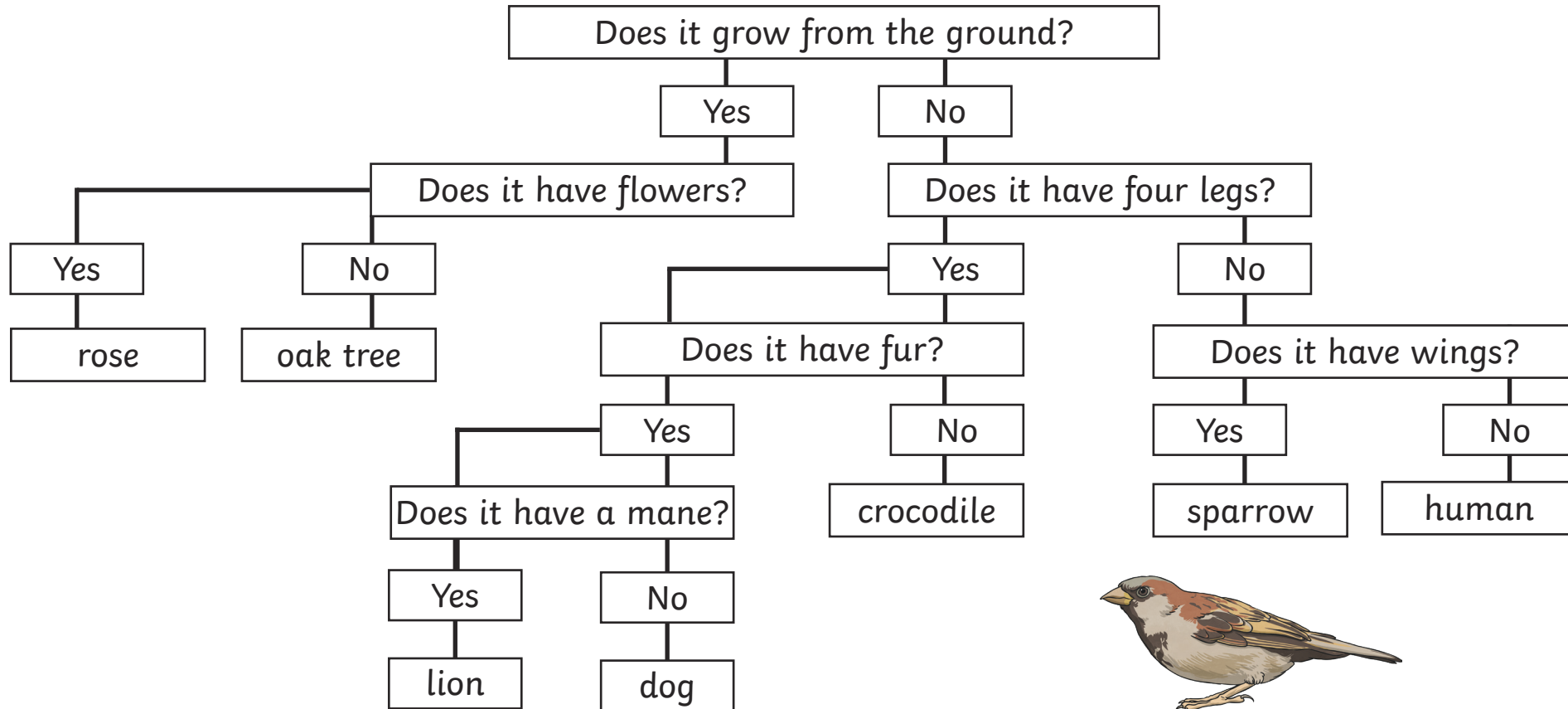


The number of vertebrates is the second digit on the keypad.

# Living Things and Their Habitats

## Clue for Digit 3

Use this classification key to work out what the name of the living thing in the picture.

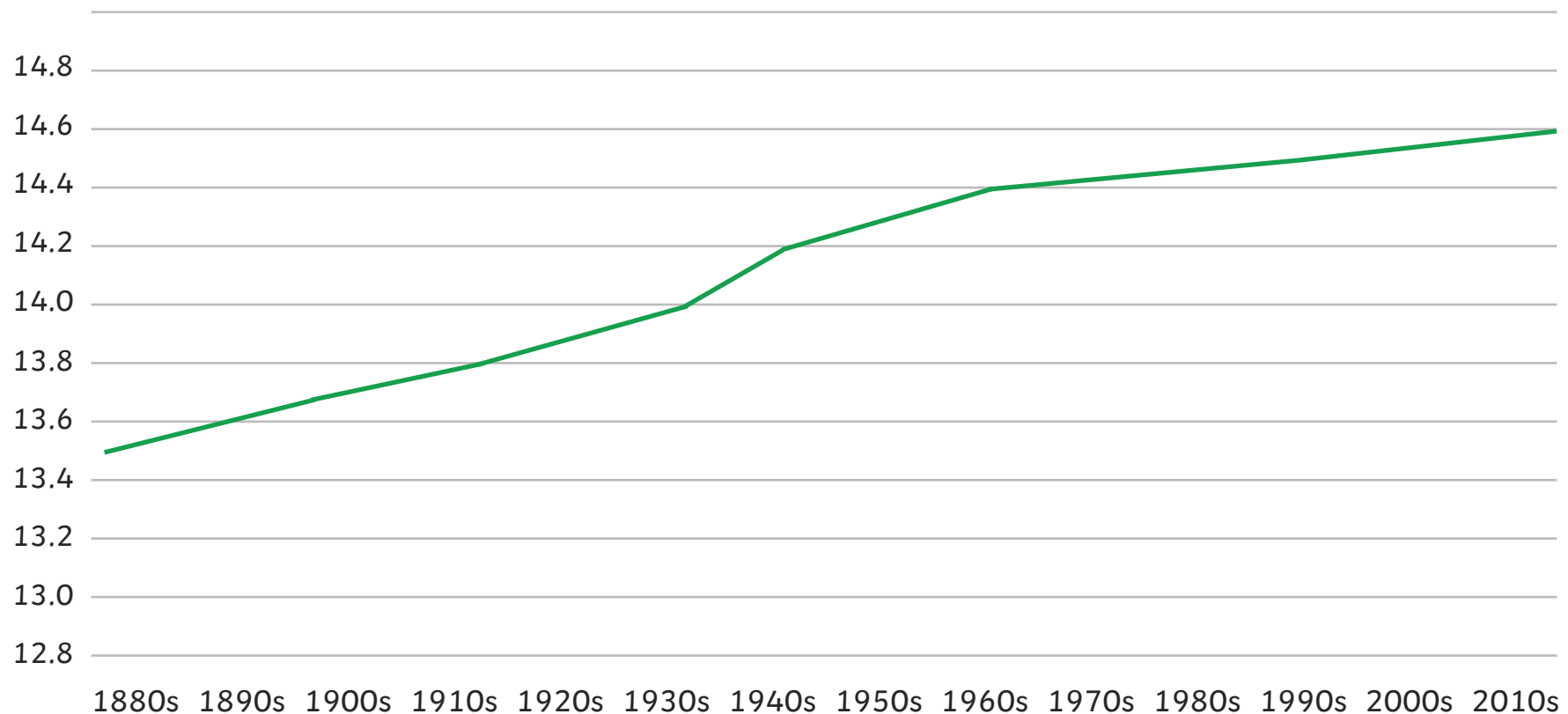


The number of questions answered to classify the living thing is the next digit on the keypad.

## Living Things and Their Habitats

## Clue for Digit 4

Climate change is having a negative impact on the habitats of polar bears due to the melting of the polar ice caps. Look at this graph which shows the change in average global temperatures in the Arctic.



The difference in temperature between the 1880s and 1990s is the next digit on the keypad.

# Living Things and Their Habitats

## Clue for Digit 5

Animals are grouped according to their characteristics. Read the clues about animal groups and write the answer with one letter in each box. The letters in the orange boxes spell the next digit on the keypad.

Cold-blooded living things that have scales and gills.

--	--	--	--

Cold-blooded invertebrates that have no backbone, no limbs and burrow in soil.

--	--	--	--	--

Cold-blooded invertebrates that have one foot, no shell and are slimy.

--	--	--	--	--

Winged vertebrates that lay eggs

--	--	--	--	--





# Living Things and Their Habitats

## Clue for Digit 6

How many of these are names given to groups of living things?



<b>birds</b>
<b>parad</b>
<b>onama</b>
<b>trealop</b>
<b>molluscs</b>
<b>amphibians</b>
<b>crustaceans</b>
<b>arachnids</b>
<b>reptiles</b>



The number of groups of living things is the sixth digit for the keypad.

# Living Things and Their Habitats

## Clue for Digit 7

Are these statements about animal classes true or false?



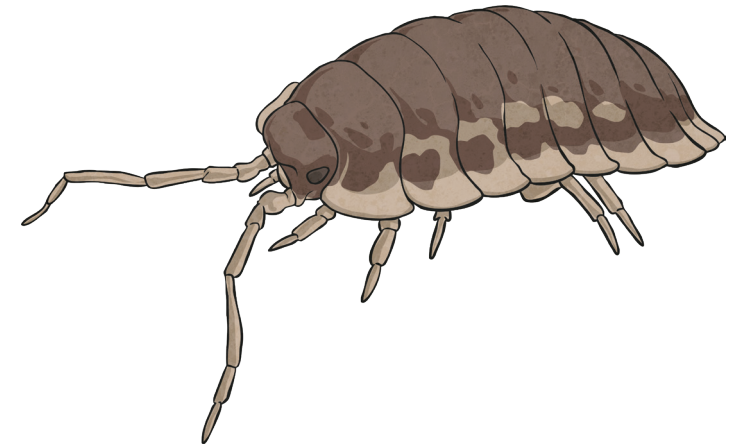
Molluscs are invertebrates.

Mammals are cold-blooded.

Reptiles lay eggs.

Birds are warm-blooded.

Woodlice are crustaceans.



If there is 1 true statement, the next digit on the keypad is 1. If there are 2 true statements, the next digit on the keypad is 2. If there are 3 true statements, the next digit on the keypad is 3.

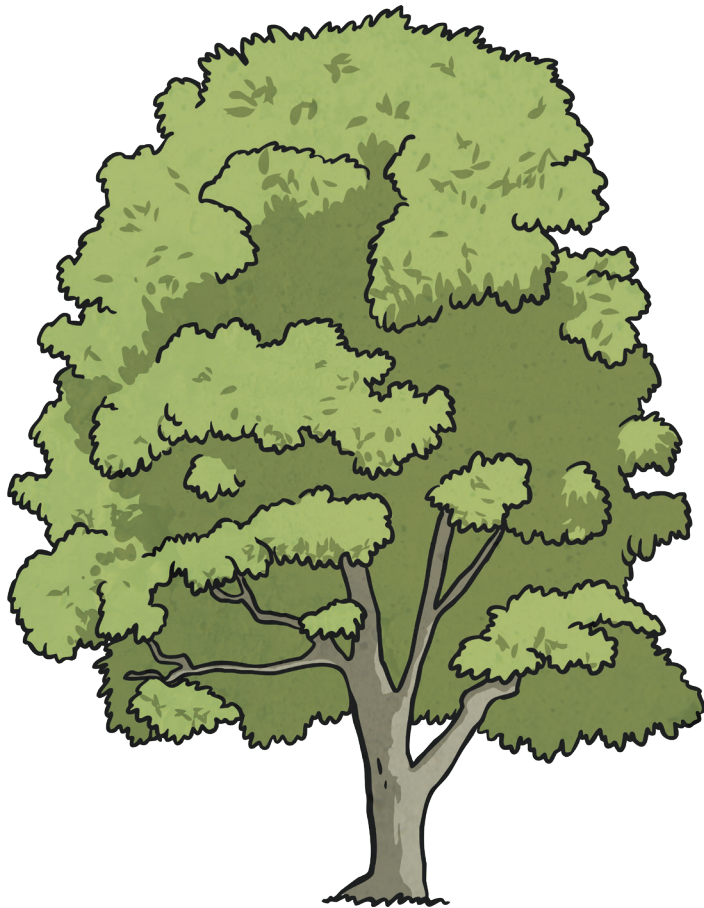
If there are 4 true statements, the next digit on the keypad is 4.

If there are five true statements, the next digit on the keypad is 5.

# Living Things and Their Habitats

## Clue for Digit 8

Plants can be classified into two sub-groups: flowering and non-flowering.  
Which group do each of these plants belong to?



apple trees
conifers
ferns
tulips
sunflowers
moss
roses



The number of flowering plants is the eighth digit on the keypad.

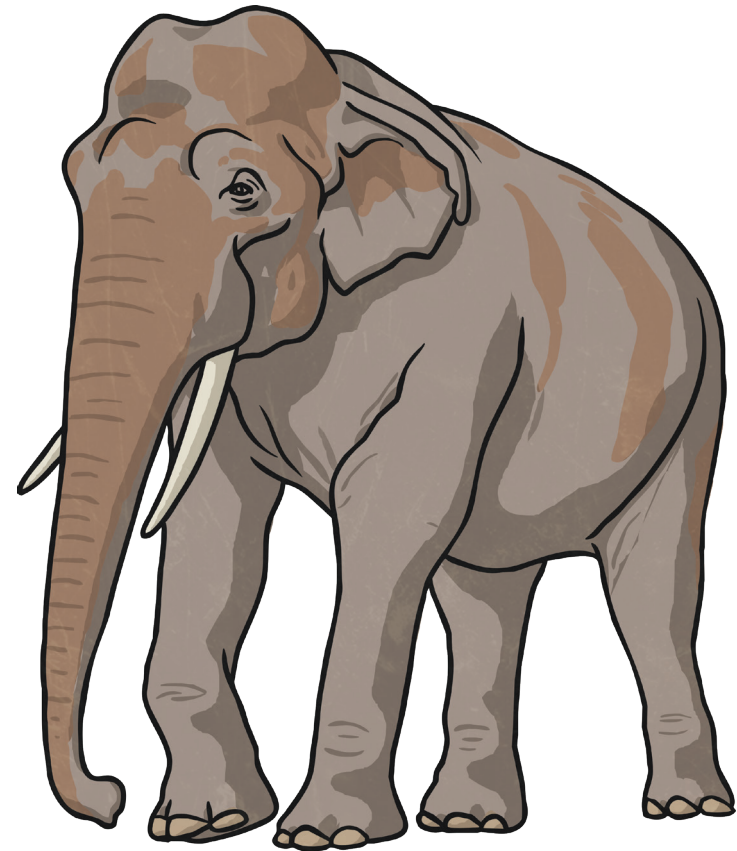


## Living Things and Their Habitats

## Clue for Digit 9

Destruction of the habitats of Asian elephants has led to a decrease in their numbers.

Decade	Number of Asian elephants
1900s	200,000
1950s	160,000
1990s	50,000
2010s	40,000



What is the difference between the population in the 2010s and the population in the 1900s?  
The second digit in your answer is the final digit for the keypad.